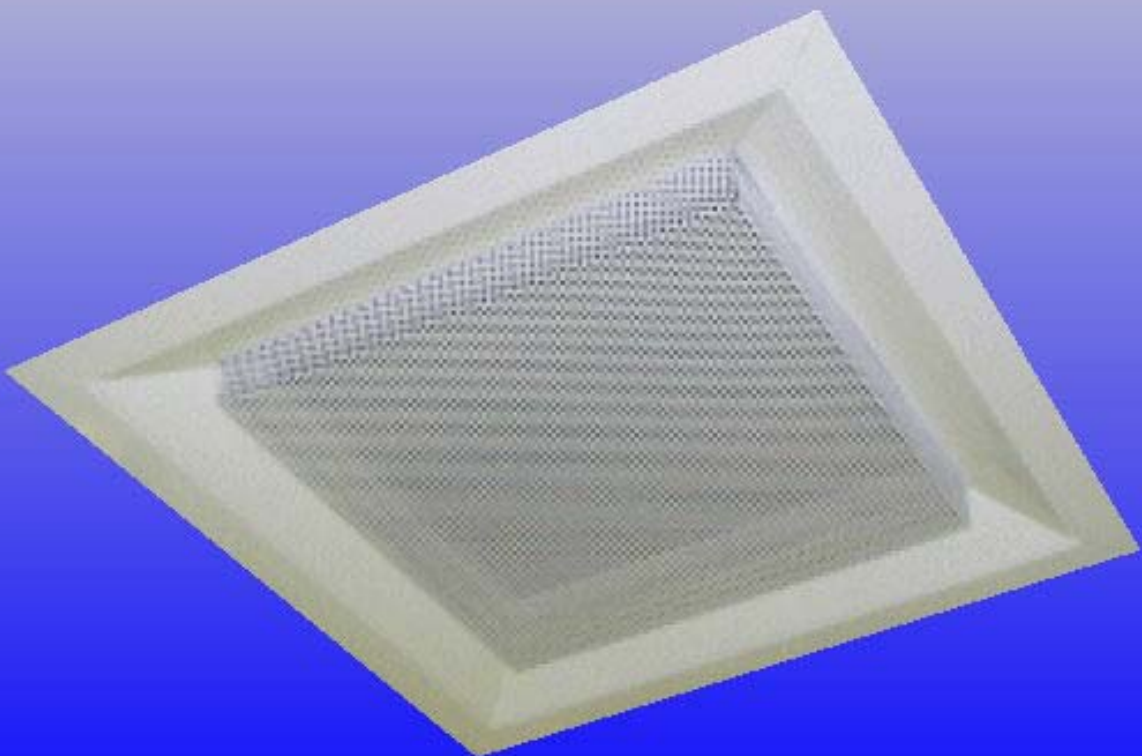




Perforated Plate Diffuser Series PPD



Perforated plate diffuser

Model

PPD

Overview

Perforated plate diffusers combine excellent air diffusion characteristics, even air distribution and a discreet, smart appearance, to give a brilliant all round supply unit.

HVC Series PPD Perforated plate diffusers are available with a variety of both functional and aesthetic options, to allow us to tailor make a unit to your specific needs.



Construction

- Ceiling diffuser type, fully extruded aluminium frame.
- Steel perforated plate, 3mm holes, staggered 5mm pitch, 0.7mm thick.

Options and accessories

HVC can supply you a standard Perforated Plate Diffuser, or a customised unit made to your exact specifications. Please see our list of options and accessories below for an overview of what we can do.

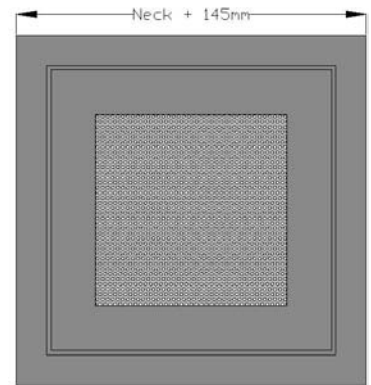
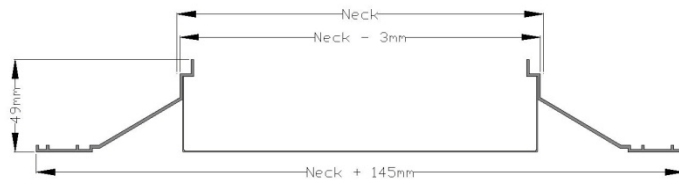
- **Opposed blade damper** - Operated via key/screwdriver, access possible by removing core. Lever operated OBDs can also be fitted to ceiling diffusers, access is also possible by removing the core.
- **Deflector plates** – Deflector plates can be affixed just behind the face of the unit to enable a specific blow pattern to be achieved. Standard blow patterns are 1, 2, 3 and 4 way blow.
- **Blanking plate** - Blanking plates enable a portion or all of the grille to be disabled. These are useful with PPDs when line of sight through the diffuser is undesirable.
- **Specialised tiles** - HVC can cater for situations where specific tile formats are needed.



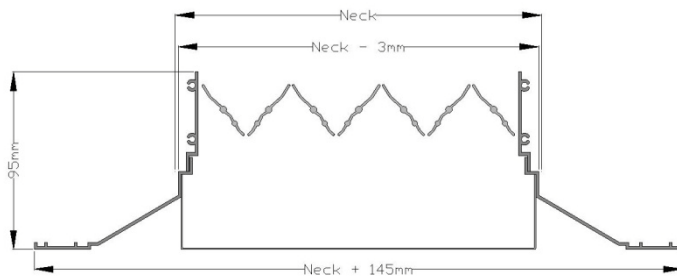
Technical information

- Free area - 46%
- PPD Mass / M² - 16.5 KG
- PPD/D Mass / M² - 24.5 KG

- (___ x ___) - PPD

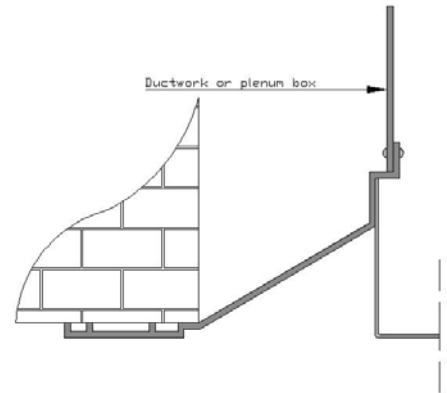


- (___ x ___) - PPD - D



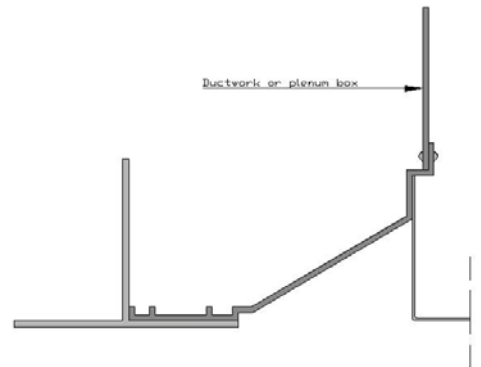
Surface mounted

A surface mounted PPD must be put into position and then fixed to supporting ductwork or plenum, using pop rivets or another suitable fixing method.



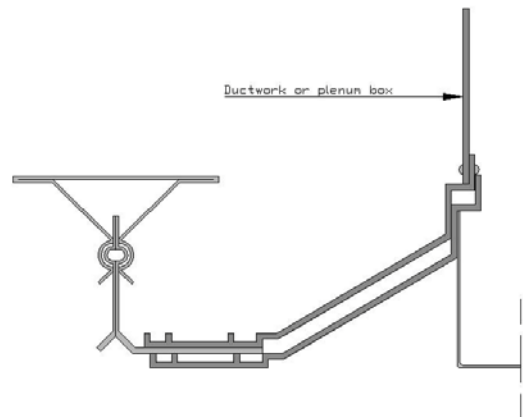
Lay in

Simply lay the diffuser into the pre-prepared T bar ceiling grid and then through the face, connect the diffuser to the ductwork.



Burgess / other tile system

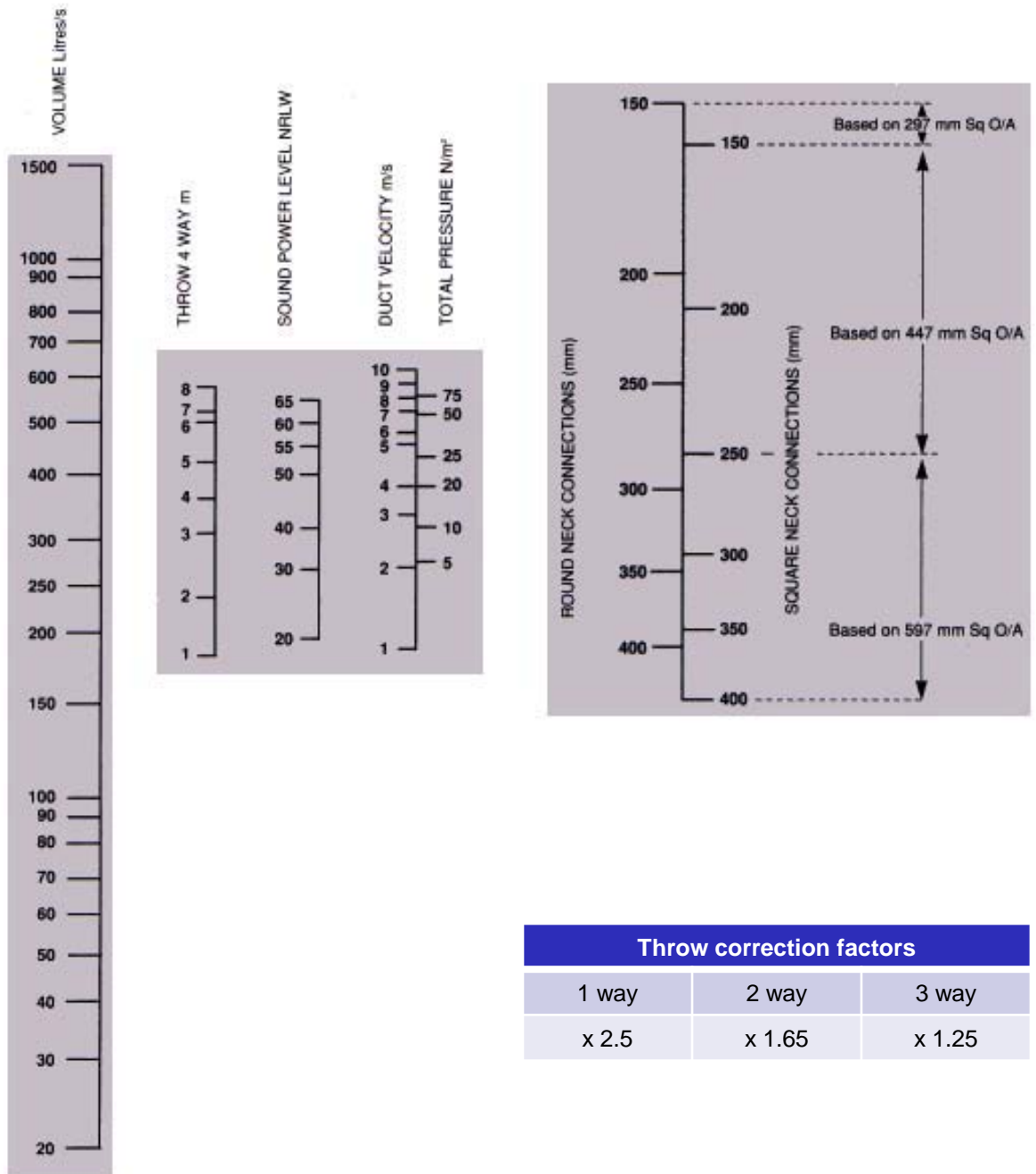
The diffuser will be fitted into the tile before despatch. Installation then involves simply clipping the burgess tile into the pre-prepared ceiling grid.



Please note - Diagrams are for illustrative purposes only



Selection data

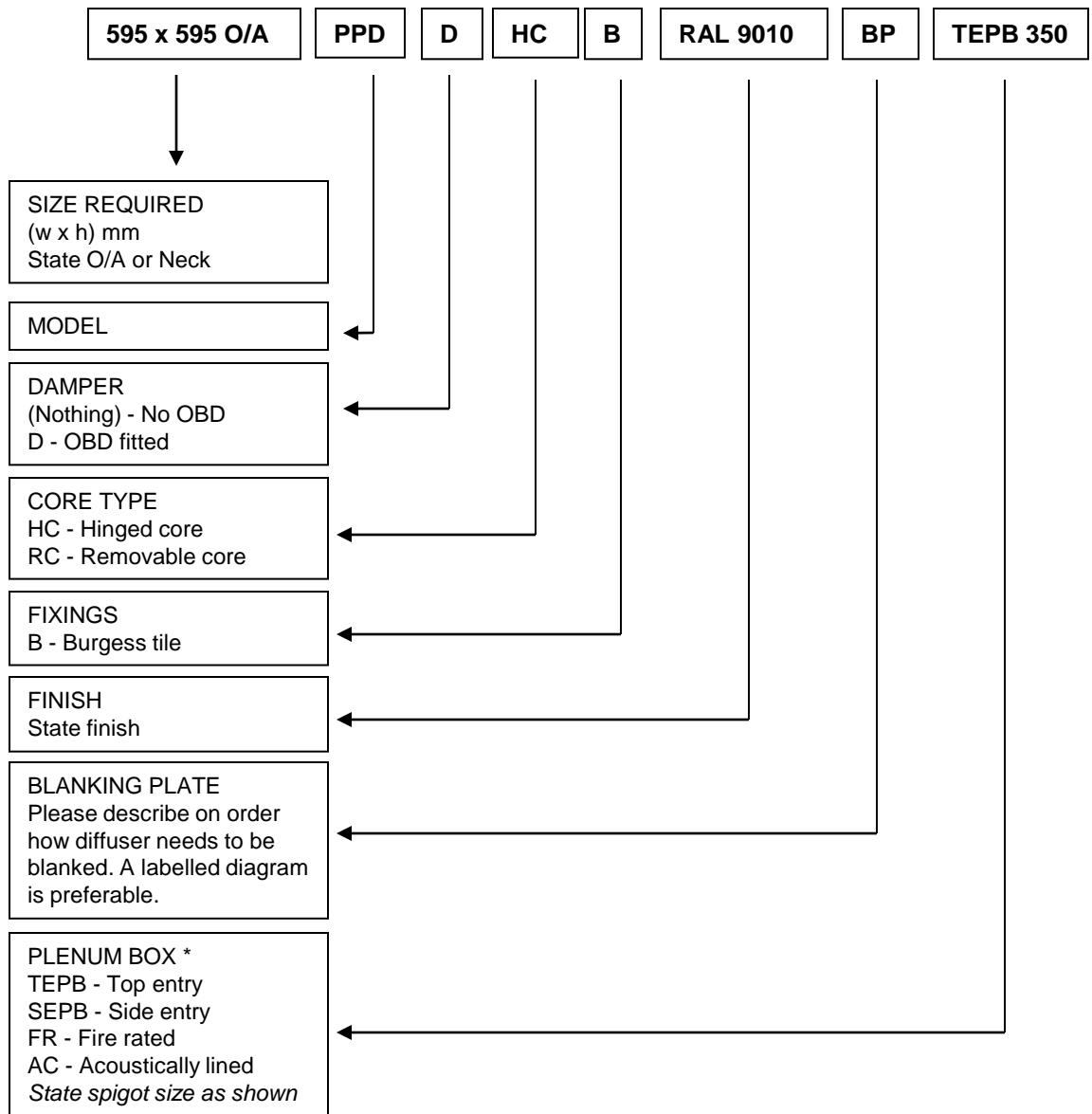


Notes:

- All values are calculated as though an opposed blade damper was fitted, in the fully open position.
- Throw is based on 10°C cooling, to a terminal velocity of 0.5m/s.
- Take off 147mm to gain nominal size from overall.



Ordering Codes



Please note: PPD diffusers not specified with a hinged /removable core but with dampers will have a hole drilled in the face to allow adjustment of the damper.

* Plenum boxes are as standard 100mm deep, please state should other depth be required.

HVC Supplies (Stourbridge) Ltd reserves the right to alter, without notice, any specifications issued. Any alterations made will appear on www.h-v-c.com as soon as possible.

