



*Incorporating*

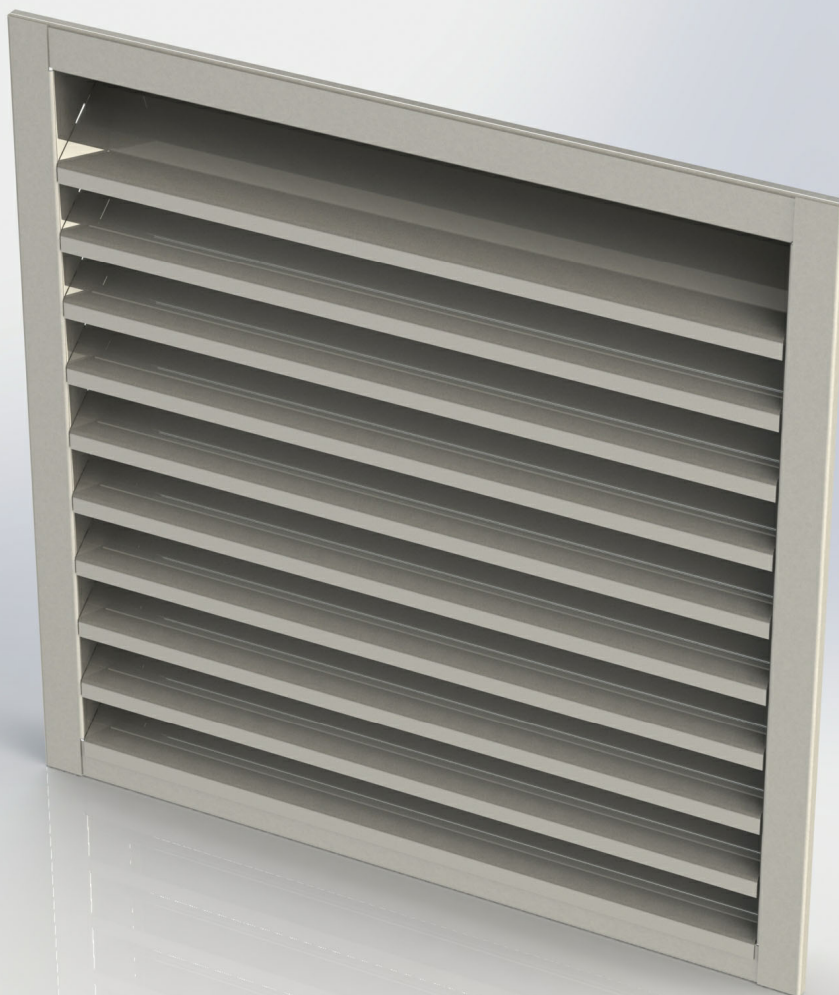


## Louvre systems

### Series WLSS / WLG

Stainless / galvanised steel weather louvres

- Fabricated weather louvre series from stainless or galvanised steel
- Stainless steel units offer superior corrosion resistance for harsh environments
- Stainless steel available in 430, 304 or 316 grade (marine spec)
- Manufactured using CNC press brake tooling
- Single bank of blades offer good resistance to rain ingress and minimal resistance to airflow



## Series WLSS / WLG

Manufactured for use in areas demanding the aesthetics given by stainless or galvanised steel, or for where corrosion resistance is essential.

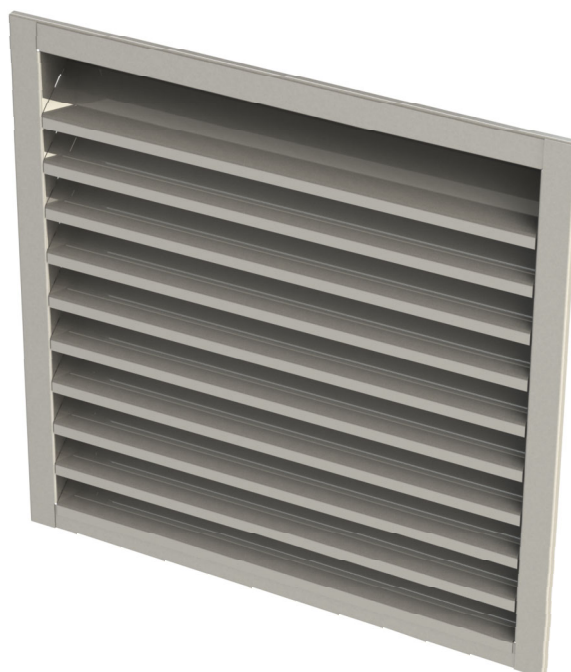
Series WLSS / WLG weather louvres are manufactured using the latest CNC press brake technology, ensuring perfectly crisp bend lines in both the frame and blades.

Manufactured with a single bank of blades, stainless steel / galvanised steel louvres present very little resistance to airflow, whilst ensuring rain ingress is kept to a minimum.

Available in stainless or galvanised steel.

Stainless units are available in three grades of stainless steel:

- 430
- 304
- 316 (marine spec)



## Design features

<b>Material</b>	Stainless steel in grades 430, 304 or 316 (marine spec)
	Galvanised steel
<b>Blade</b>	47mm pitch with approximately 40° face slope
<b>Core</b>	Fixed
<b>Frame</b>	Flanged
<b>Fixings</b>	Standard: None
	Optional: See page 5
<b>Mass/m<sup>2</sup> face area</b>	20 kg
<b>Free area</b>	Approximately 55% (varies with size)

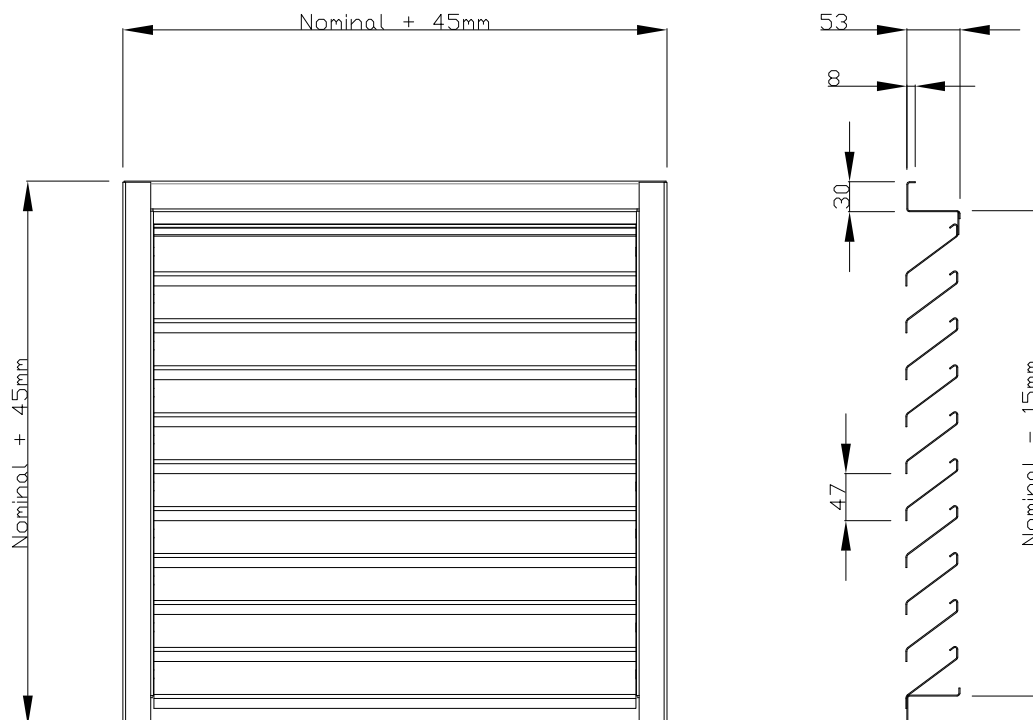
## Quality assurance

HVC Supplies (Stourbridge) Ltd is an ISO 9001 certified company.



Assessed to ISO 9001  
Cert/Ref No. 1186

## Technical drawings



## Frame types

The below table shows the standard and optional frames available for WLSS and WLG louvres, along with ordering codes and dimensions.

These are only standard frame types. If you have a special requirement not shown here, please contact us.

Frame code	Description	Standard or optional	Nominal to overall size	Overall depth
30F	30mm flat	Standard	+ 45mm	53mm
50F	50mm flat	Optional	+ 85mm	53mm

## Technical notes

---

### Stop gaps

Louvre blades are laid out starting with the bottom blade and then working upwards.

Should a whole number of blades not be possible to fit into the required height, the top-most blade will either be cut down, or a stop gap will be fitted.

The maximum height of stop gap is approximately 25mm

Stop gaps are visible only as flat stainless steel sections.

### Welds

In some areas of the louvre minor discolouration may be visible due to welds.

## Large units

---

Large louvres may need to be produced in sections. The number of sections can be stated in your ordering code, or will be decided by HVC and stated on your order acknowledgement.

### Side-by-side sections

Non continuous appearance. Blades will be edged with a flat profile to be butted up to its adjacent profile.

### Vertically stacked sections

Units will be manufactured in sections of equal height, to be stacked together upon installation.

Joining strips can be supplied if required to ensure alignment.

## Fixings

### None (Standard)

Most weather louvres are supplied with no fixings.

In this instance we recommend drilling through either the louvre flange or the neck, and screwing directly into the supporting structure with an appropriate fixing.



### Predrilled face fixing holes - FH

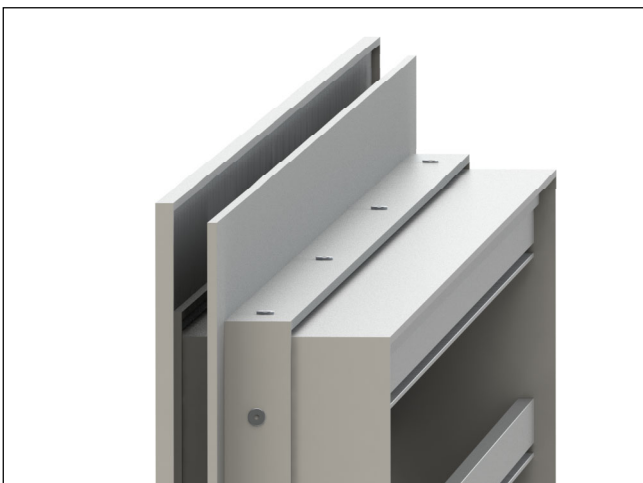
5mm fixing holes will be drilled into the louvre frame allowing quick and easy fitting on site.

Number and layout of fixing holes will be appropriate to louvre size. Arrangements can be specified.



### Glazing bar - GZ (Required depth needed)

An additional frame can be fixed to the louvre neck to create a glazing bar frame suitable for installation into uPVC channels in place of glass window panes.

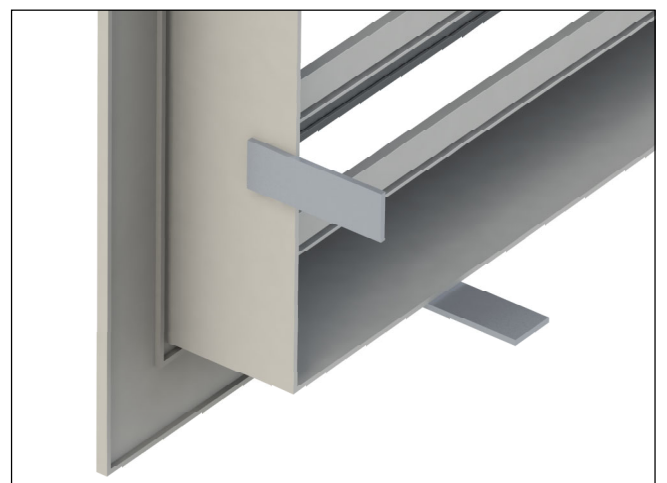


### Rear mounted concealed fixing lugs - Ordering code RFL

25mm wide lugs, protruding 50mm from the back of the louvre neck can be factory fitted to your louvre.

Lugs are supplied undrilled to accept whatever fixing is required on site, and are either welded or double riveted to the louvre.

An appropriate amount of lugs will be fitted to suit the louvre size.



**Please note:** Images show fixing methods on Series WL standard louvres, the fixings supplied with Series WLSS louvres may vary slightly from that shown.

## Finish

Bare metal only



## Ordering codes

### Example

1 - 1000 x 1000 - WLSS - 316 - 50F - BM - FH - 1S

### Codes

1)	Quantity		
2)	Size (mm)	(Width x height)	
3)	Series	WLSS WLG	Stainless steel weather louvre Galvanised steel weather louvre
4)	Stainless steel grade	430 304 316	Grade 430 Grade 304 Grade 316 (marine spec)
5)	Flanges	30F 50F	30mm flat flange 50mm flat flange
6)	Debris screens	BM IM VM	Bird mesh (12.7mm x 12.7mm weave, galvanised steel) Insect mesh (1.6mm x 1.6mm weave, G304 stainless steel) Vermin mesh (6mm x 6mm weave, G304 stainless steel)
7)	Fixings	FH RFL GZ	Predrilled face fixing holes Rear mounted fixing lugs Glazing bar. State depth required.
8)	Sections	_S	Number of sections required. If left blank this will be confirmed on order acknowledgement.

Leave code section blank if no option is required.

Unless stated, sizes are taken to be nominal, and will have a tolerance removed to aid fitting.

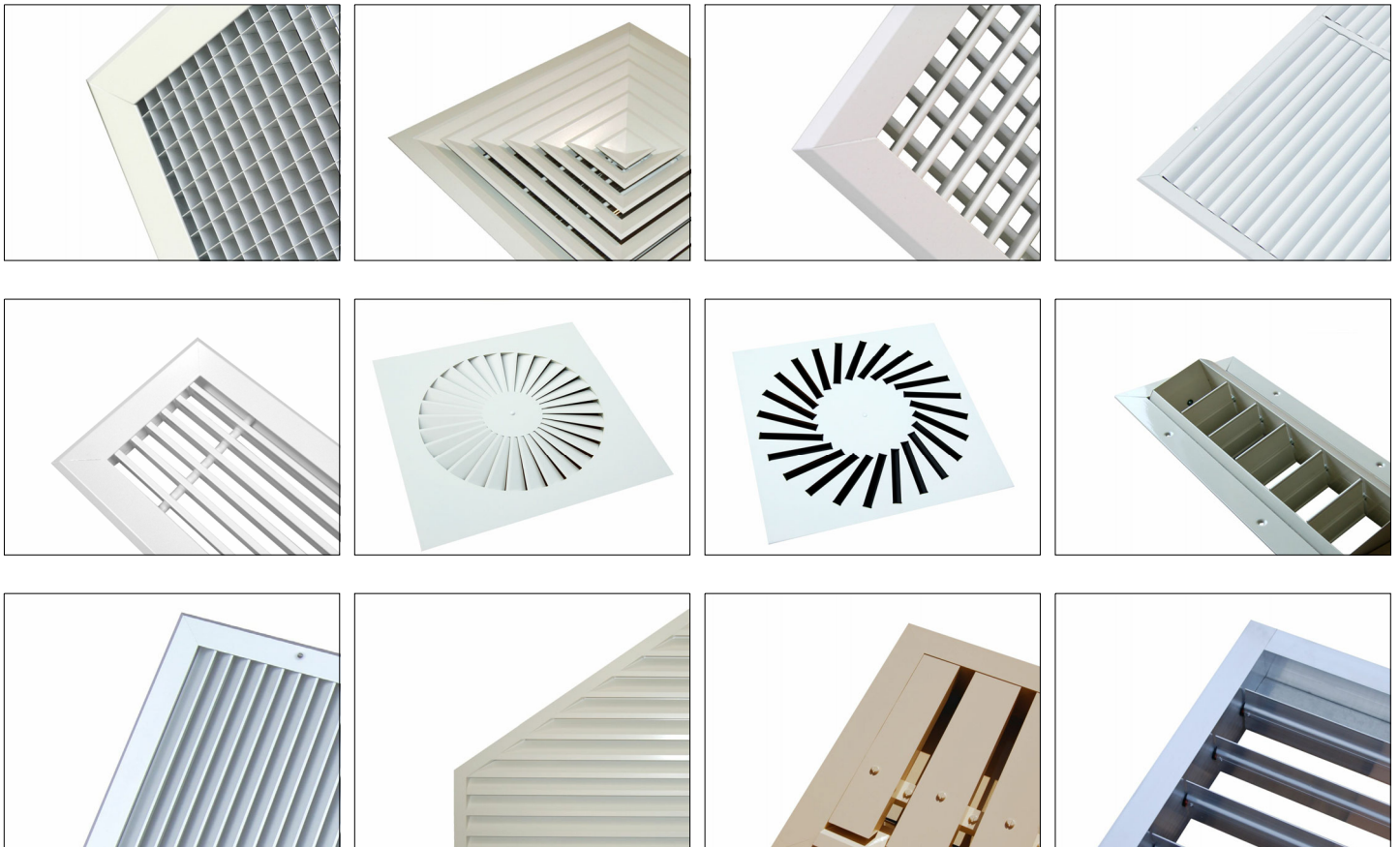


## HVC & NCA products

HVC offer the significant advantage of manufacturing both in duct and duct terminal equipment, making us a one stop shop for all your HVAC needs.

The products shown below are a selection, not an exhaustive list. Go to [www.h-v-c.com](http://www.h-v-c.com) for details on all HVC and NCA products.

### HVC: Grilles, Diffusers, Louvres and Volume Control Dampers



### NCA: Fire and Volume Control Dampers





Assessed to ISO 9001  
Cert/Ref No. 1186

HVC Supplies (Stourbridge) Ltd  
Jason House  
Amblecote  
West Midlands  
DY8 4EY  
United Kingdom

Tel: +44 (0)1384 376555  
Fax: +44 (0)1384 392555

[sales@h-v-c.com](mailto:sales@h-v-c.com)

[www.h-v-c.com](http://www.h-v-c.com)

All details within this brochure are correct at time of publication. However HVC's policy is one of continual product development. The right is reserved to alter any details published in this brochure without any prior notice. Any changes will appear on [www.h-v-c.com](http://www.h-v-c.com) as soon as is practically possible.

All information in this brochure is designed to be used for informative purposes only. HVC will not be legally bound by anything contained within this publication, or any other information distributed.

All references to companies not part of the HVC group of companies are used with the permission of their respective owners.