



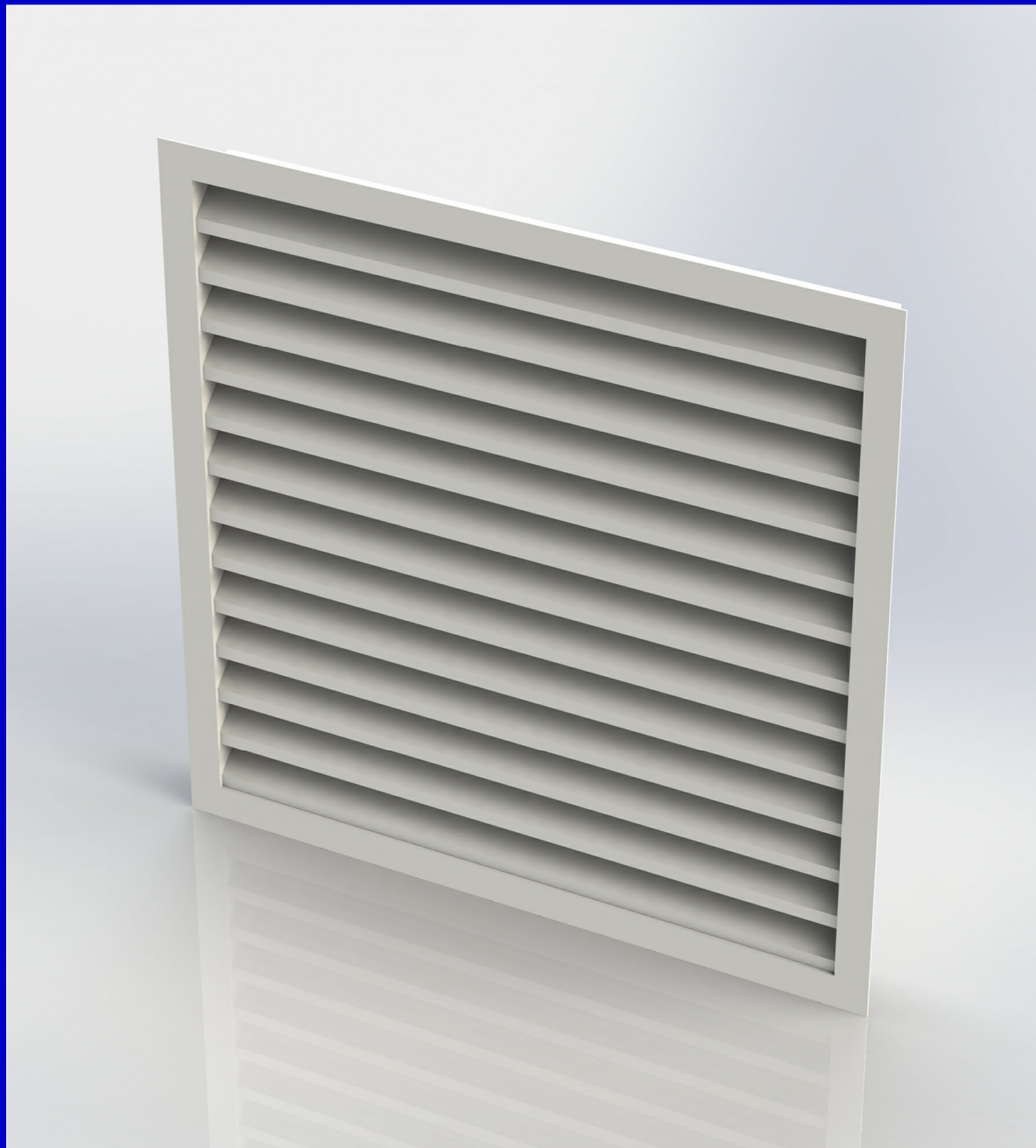
*Incorporating*



## Louvre systems

### **Series DBL** Double bank weather louvres

- Double bank louvre system for increased resistance to rain ingress
- No visual difference to Series WL standard weather louvres
- Non vision feature with no line of sight through the blades
- Aluminium construction for high corrosion resistance
- Polyester powder coating to the full range of RAL and BS colours.



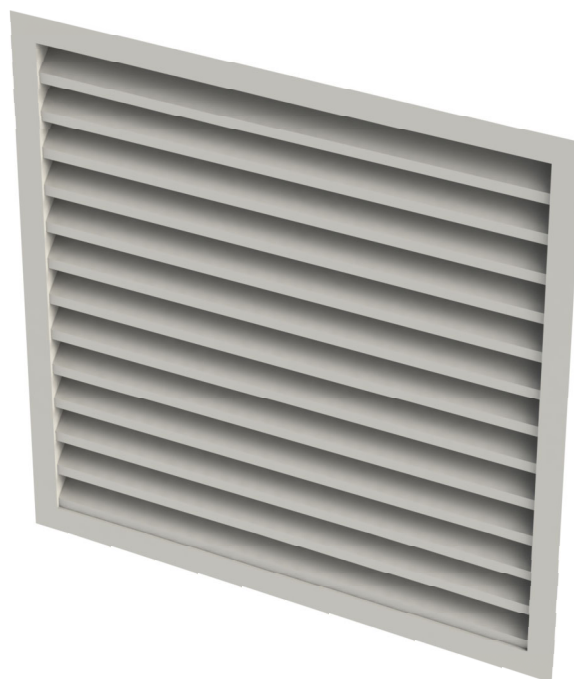
## Series DBL

Series DBL double bank louvres are a specialist louvre system designed to provide elevated levels of rain rejection, whilst also providing a non vision quality by blocking direct line of sight through the louvre.

The use of WL50 and WL75 blades makes Series DBL louvres visually identical to our Series WL range of standard weather louvres, perfect for when certain areas on the same installation require increased rain resistance than others.

As an option, DBL louvres can be supplied with inverted blades; blades with these units are separated by approximately 3mm to allow water ejection.

With all major elements constructed from extruded aluminium, resistance to corrosion is assured, while our in-house powder coating facility means that we can supply double bank louvres in a full range of RAL or BS colours.



## Design features

<b>Material</b>	Extruded aluminium BZP steel screws or aluminium pop rivets
<b>Sizes</b>	Minimum heights (flanged units, nominal): <b>DBL50:</b> 125mm <b>DBL75:</b> 175mm <b>DBL50-INV:</b> 190mm <b>DBL75-INV:</b> 300mm
<b>Blade</b>	<b>DBL50 and DBL50-INV:</b> 50mm pitch, 45° face slope <b>DBL75 and DBL75-INV:</b> 75mm pitch, 45° face slope
<b>Core</b>	Fixed
<b>Frame</b>	Standard: Flanged Optional: Recessed and reversed
<b>Fixings</b>	Standard: None Optional: See page 5
<b>Finish</b>	Standard: Mill aluminium Optional: See page 6
<b>Mass/m<sup>2</sup> face area (approx.)</b>	<b>DBL50 and DBL50-INV:</b> 16 kg <b>DBL75 and DBL75-INV:</b> 24 kg

## Quality assurance

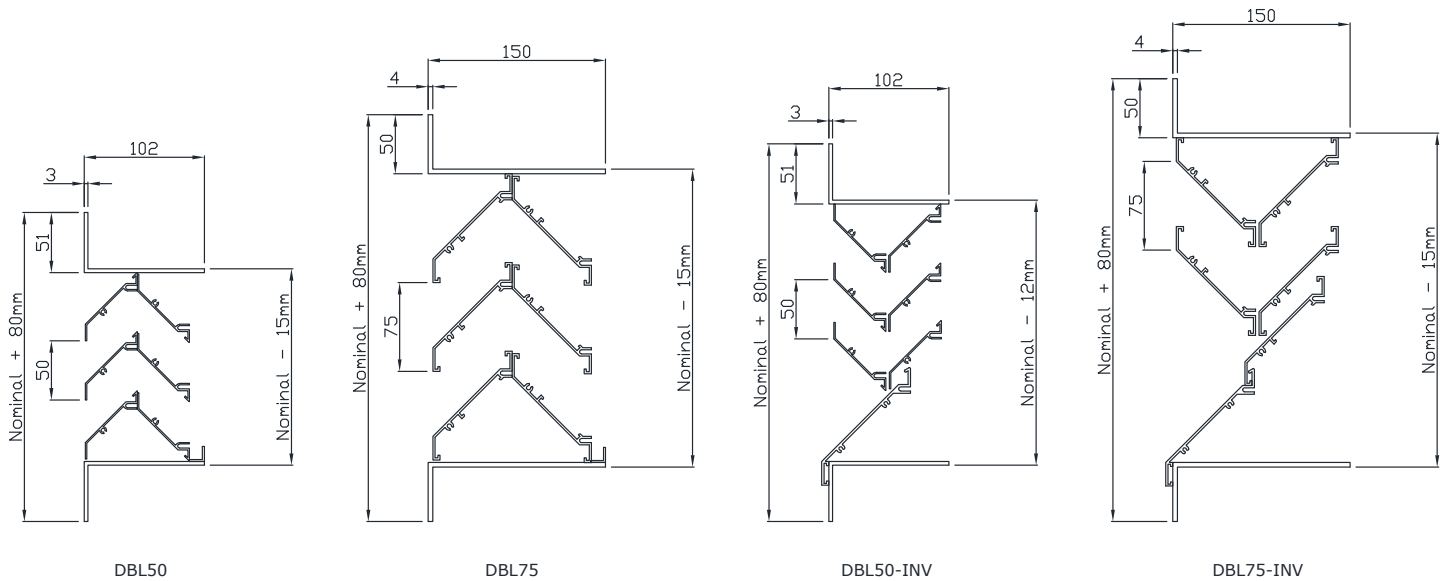
HVC Supplies (Stourbridge) Ltd is an ISO 9001 certified company.



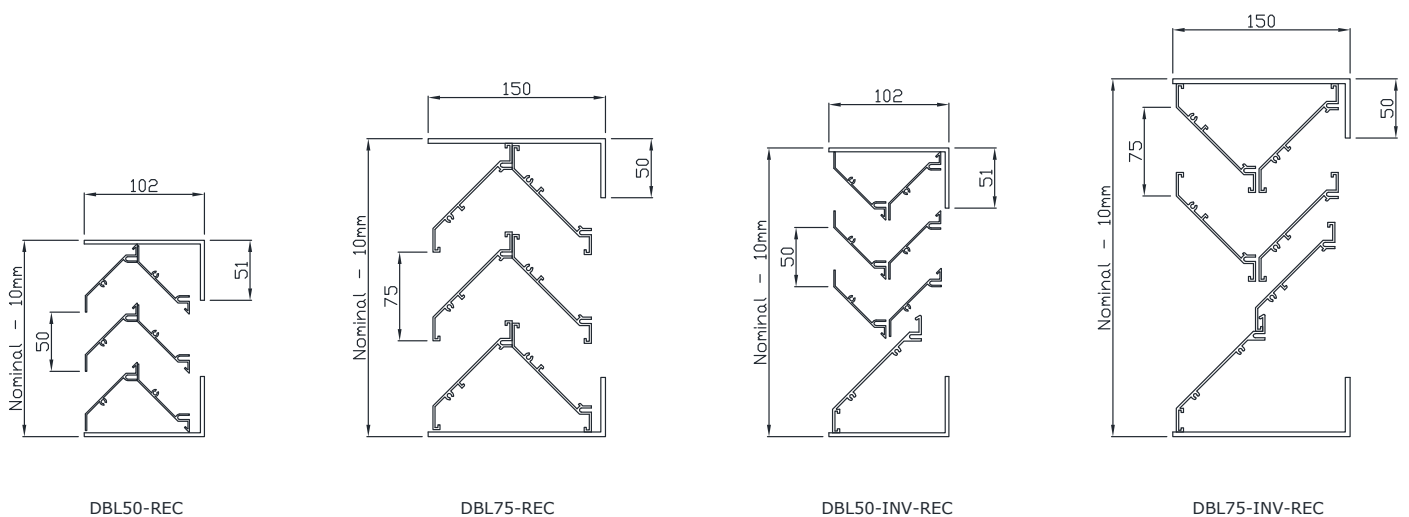
Assessed to ISO 9001  
Cert/Ref No. 1186

## Technical drawings

### Flanged (standard)

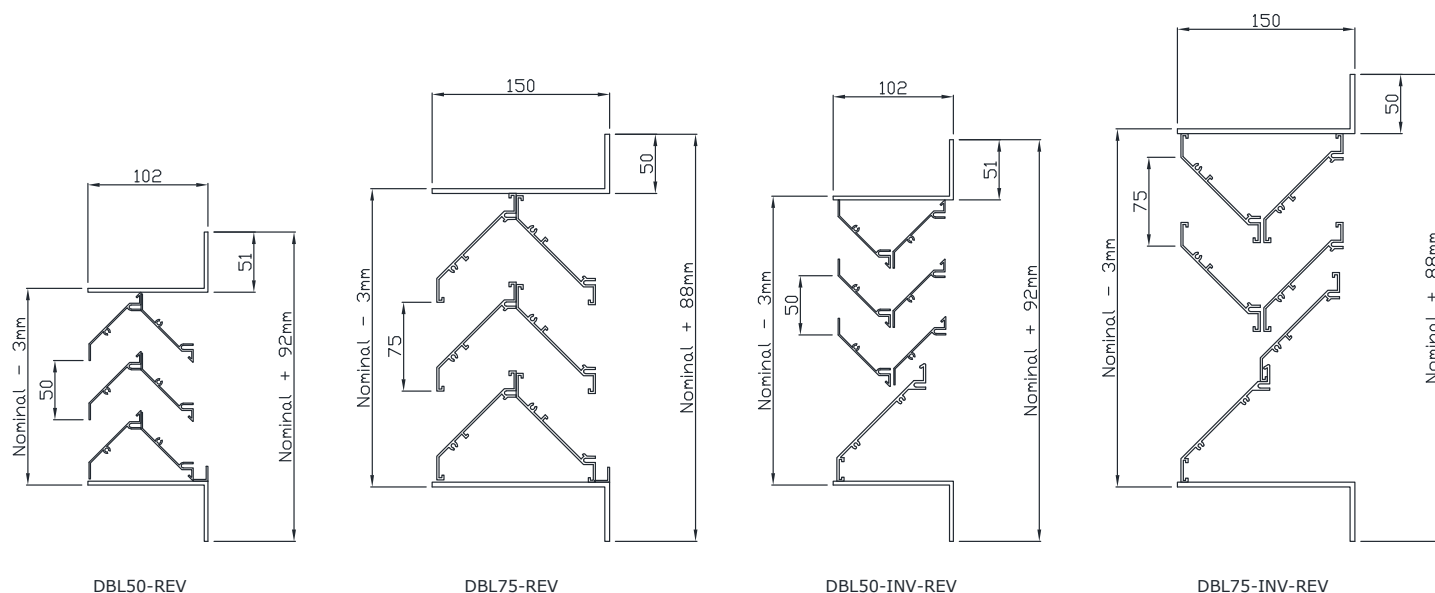


### Recessed frame - REC (optional)



## Technical drawings

### Reversed frame - REV (optional)



## Technical notes

### Stop gaps

Louvre blades are laid out starting with the bottom blade and then working upwards.

Should a whole number of blades not be possible to fit into the required height, the top-most blade will either be cut down, or a stop gap will be fitted.

Stop gaps are visible only as flat aluminium sections.

### Large units

Large louvres may need to be produced in sections. The number of sections can be stated in your ordering code, or will be decided by HVC and stated on your order acknowledgement.

### Side-by-side sections

Non continuous appearance. Blades will be edged with a recessed frame to be butted up to its adjacent profile.

Sides will be predrilled to accept joining bolts.

### Vertically stacked sections

Units will be manufactured in sections of roughly equal height, to be stacked together upon installation.

Joining strips can be supplied if required to ensure alignment.

## Fixings

### None (Standard)

Most weather louvres are supplied with no fixings.

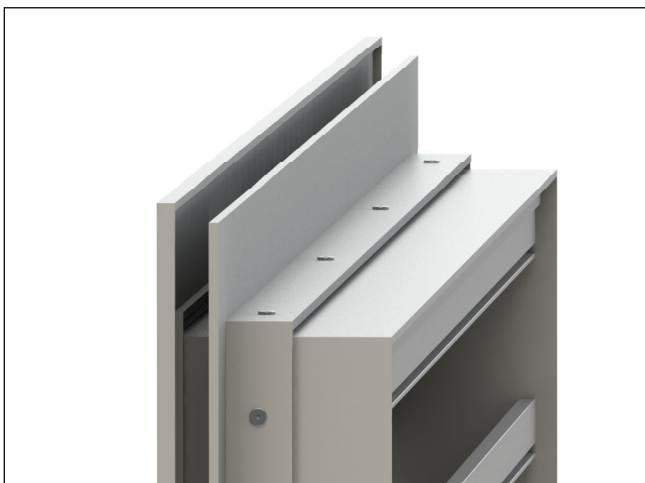
In this instance we recommend drilling through either the louvre flange or the neck, and screwing directly into the supporting structure with an appropriate fixing.



### Glazing bar - Ordering code GZ (Required depth needed)

An additional frame can be fixed to the louvre neck to create a glazing bar frame suitable for installation into uPVC channels in place of glass window panes.

Only available with flanged and reversed flange louvres.



**Please note:** Images show fixing methods and options on Series WL standard louvres. Appearances may vary slightly from that shown.

### Pre-drilled face fixing holes - Ordering code FH

5mm fixing holes (not countersunk) will be drilled into the louvre frame before powder coating, allowing quick and easy fitting on site.

Number and layout of fixing holes will be appropriate to louvre size. Arrangements can be specified.

Supplied with pozidrive self tapping screws in the same finish as the louvre.

Only available with flanged and reversed flange louvres.



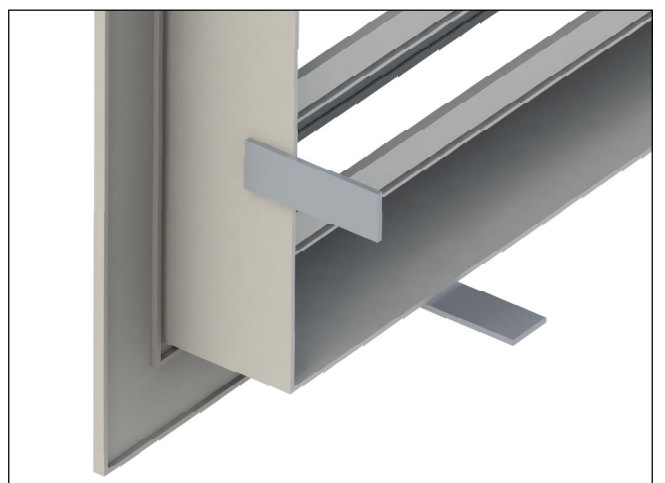
### Rear mounted concealed fixing lugs - Ordering code RFL

3mm thick, 25mm wide aluminium lugs, protruding 50mm from the back of the louvre neck can be factory fitted to your louvre.

Lugs are supplied undrilled to accept whatever fixing is required on site, and are either welded or double riveted to the louvre.

An appropriate amount of lugs will be fitted to suit the louvre size.

Only available with flanged and recessed louvres.



## Finish

Mill aluminium (standard)

Polyester powder coating to any RAL or BS colour



## Ordering codes

### Example

1 - 1000 x 1000 - DBL75 - BS - FH - RAL9010 - 1S

### Codes

1)	Quantity		
2)	Size (mm)	(Width x height)	
3)	Series	DBL50 DBL75 DBL50-INV DBL75-INV	50mm pitch double bank weather louvre 75mm pitch double bank weather louvre 50mm pitch double bank weather louvre - Inverted blades 75mm pitch double bank weather louvre - Inverted blades
4)	Frame design	(nothing) REC REV	Flanged Recessed Reversed
5)	Debris screens	BM IM VM	Bird mesh (12.7mm x 12.7mm weave, galvanised steel) Insect mesh (1.6mm x 1.6mm weave, G304 stainless steel) Vermin mesh (6mm x 6mm weave, G304 stainless steel)
6)	Fixings	FH FL GZ	Predrilled face fixing holes (available with flanged and reversed frames only) Rear mounted fixing lugs (available with flanged and recessed frames only) Glazing bar. State depth required.
7)	Finish	Mill RAL... BS...	Mill aluminium (standard) Polyester powder coated to RAL... Polyester powder coated to BS...
8)	Sections	_S	Number of sections required. If left blank this will be confirmed on order acknowledgement.

Leave code section blank if no option is required.

Unless stated, sizes are taken to be nominal, and will have a tolerance removed to aid fitting.

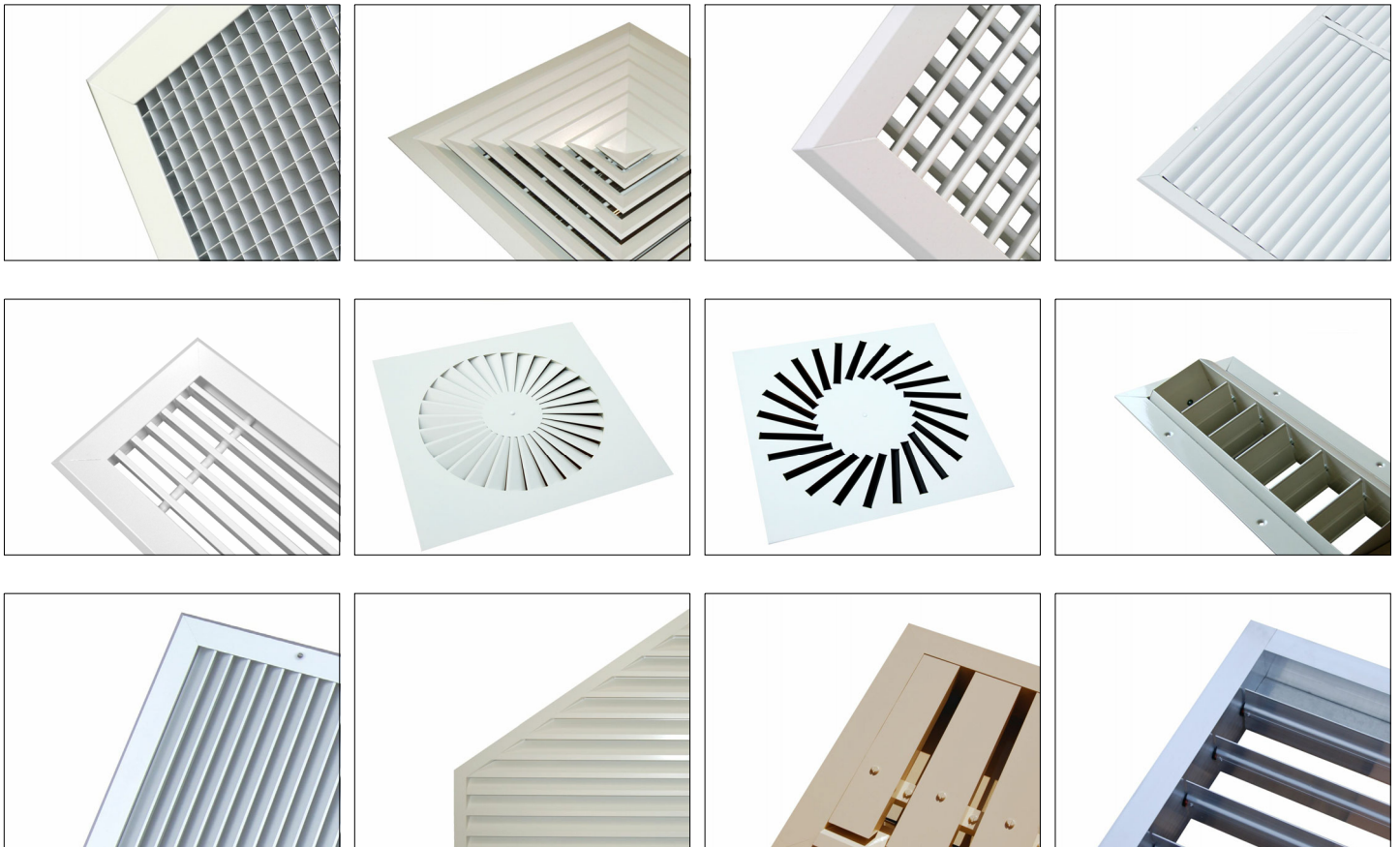


## HVC & NCA products

HVC offer the significant advantage of manufacturing both in duct and duct terminal equipment, making us a one stop shop for all your HVAC needs.

The products shown below are a selection, not an exhaustive list. Go to [www.h-v-c.com](http://www.h-v-c.com) for details on all HVC and NCA products.

### HVC: Grilles, Diffusers, Louvres and Volume Control Dampers



### NCA: Fire and Volume Control Dampers





Assessed to ISO 9001  
Cert/Ref No. 1186

HVC Supplies (Stourbridge) Ltd  
Jason House  
Amblecote  
West Midlands  
DY8 4EY  
United Kingdom

Tel: +44 (0)1384 376555  
Fax: +44 (0)1384 392555

[sales@h-v-c.com](mailto:sales@h-v-c.com)

[www.h-v-c.com](http://www.h-v-c.com)

All details within this brochure are correct at time of publication. However HVC's policy is one of continual product development. The right is reserved to alter any details published in this brochure without any prior notice. Any changes will appear on [www.h-v-c.com](http://www.h-v-c.com) as soon as is practically possible.

All information in this brochure is designed to be used for informative purposes only. HVC will not be legally bound by anything contained within this publication, or any other information distributed.

All references to companies not part of the HVC group of companies are used with the permission of their respective owners.