



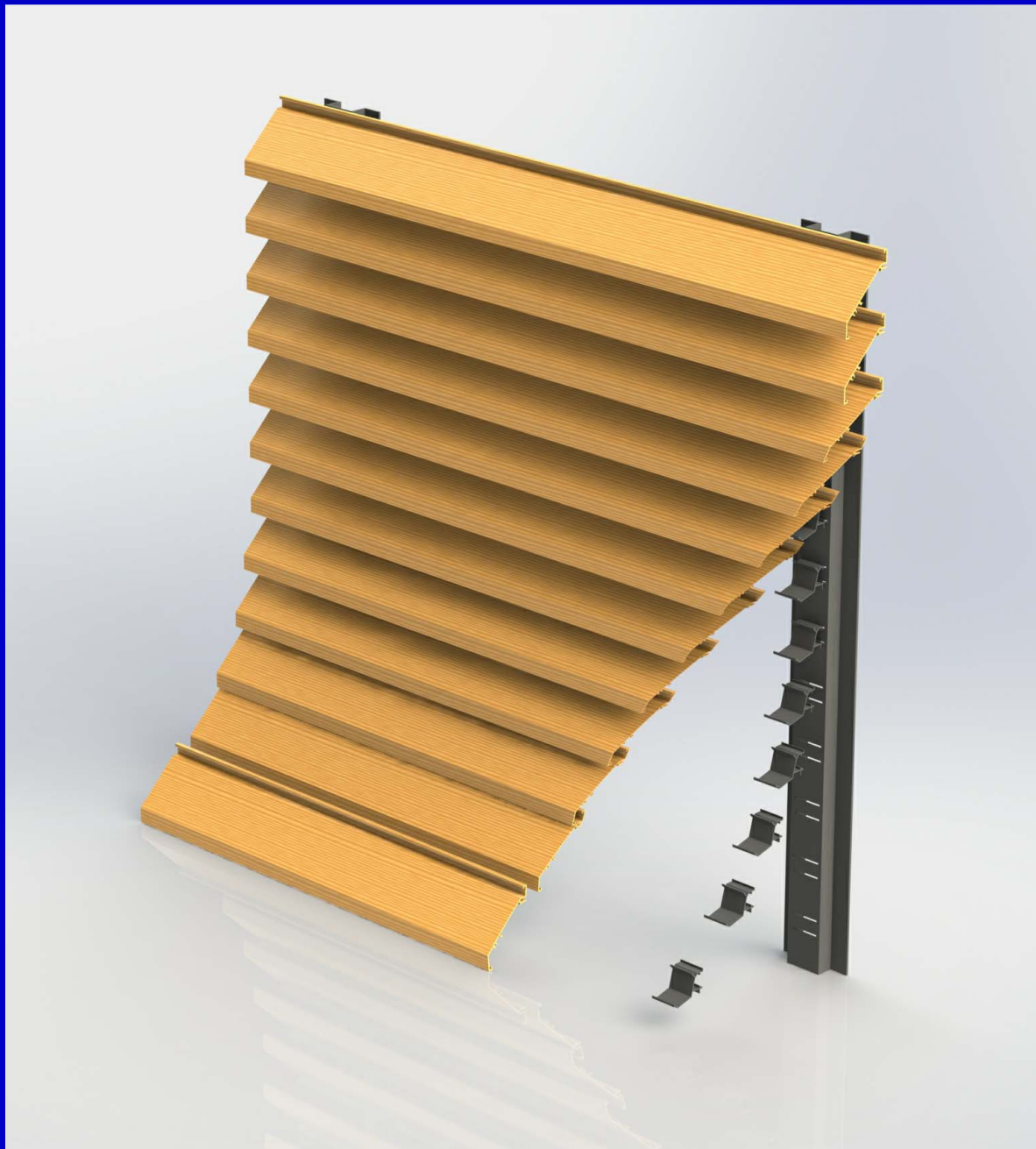
*Incorporating*



## Louvre systems

### Series WLX Site-assembly louvre cladding

- Supplied in kit form
- Unlimited maximum size
- Concealed support structure
- Clip system designed in conjunction with the aluminium extrusion experts at Sapa
- Finishes including wood effect wrap, polyester powder coat and anodised



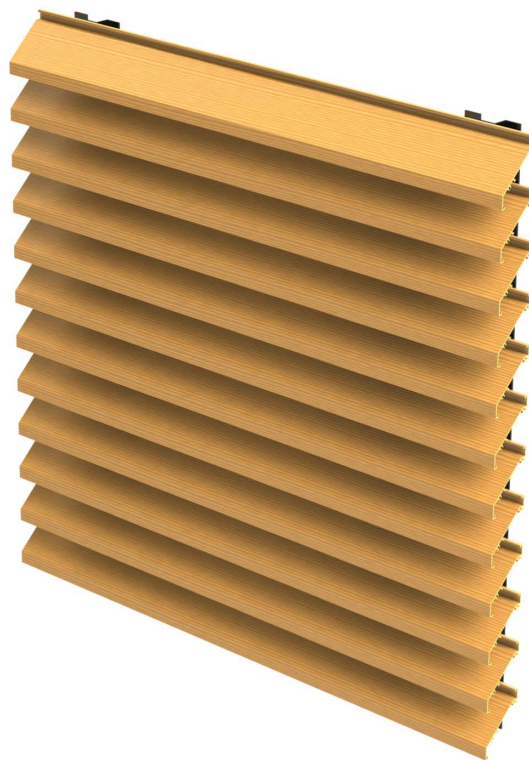
## Series WLX

Series WLX louvre cladding is supplied unassembled for construction on site.

With no maximum size, it is suitable for very large applications, and is fully compatible with Series WLD Louvre Doors enabling access through the unit.

The clip extrusion has been designed in conjunction with the experts at Sapa, and is designed to make the initial build quick and simple, but once in place to give an exceptionally strong mate between the parts.

With a wealth of finish options available including anodising, wood effect wraps and polyester powder coating, Series WLX site assembly louvres can be made to suit any installation.



## Design features

<b>Material</b>	Extruded aluminium
<b>Blade</b>	WL75 type single bank
<b>Core</b>	Fixed
<b>Frame</b>	Concealed
<b>Mass/m<sup>2</sup> face area</b>	14kg
<b>Free area</b>	Approx 50% (varies with size)

### Important note:

Free area is not a reliable guide to performance.

It is possible to have two louvres with identical geometric free areas but different airflow characteristics.

Wherever possible use a tested airflow coefficient, as stated on the following page or available in the test certificate for WL75 louvres which this product is derived from.

## Quality assurance

HVC Supplies (Stourbridge) Ltd is an ISO 9001:2008 accredited company.



Assessed to ISO 9001:2008  
Cert/Ref No. 1186

## BSRIA testing

The Series WLX Louvre Cladding system is derived from Series WL75 Standard Weather Louvres which have been tested against:

### **BS EN 13030:2001**

The testing was carried out in April 2013 by BSRIA in Bracknell, Berkshire, England.

Copies of the test report are available on request.



## Performance

WL75 testing was carried out using an optional drip tray, this will have had very little impact on airflow performance, but substantial impact on water rejection performance.

If you require water rejection performance to be as detailed below, we can supply a rear mounted drip tray to suit.

### **Water rejection performance**

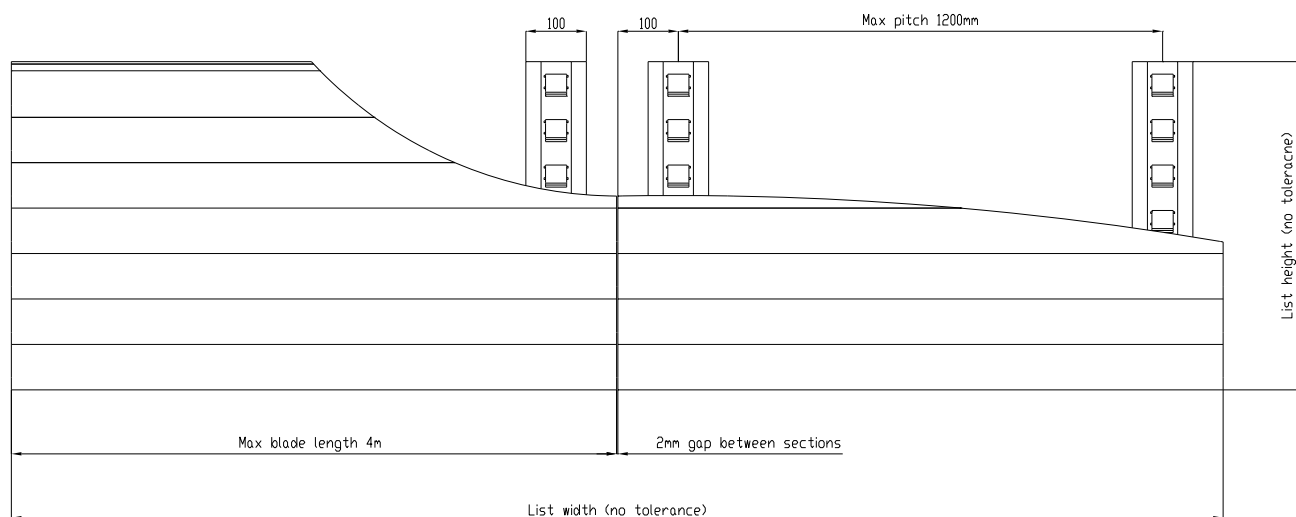
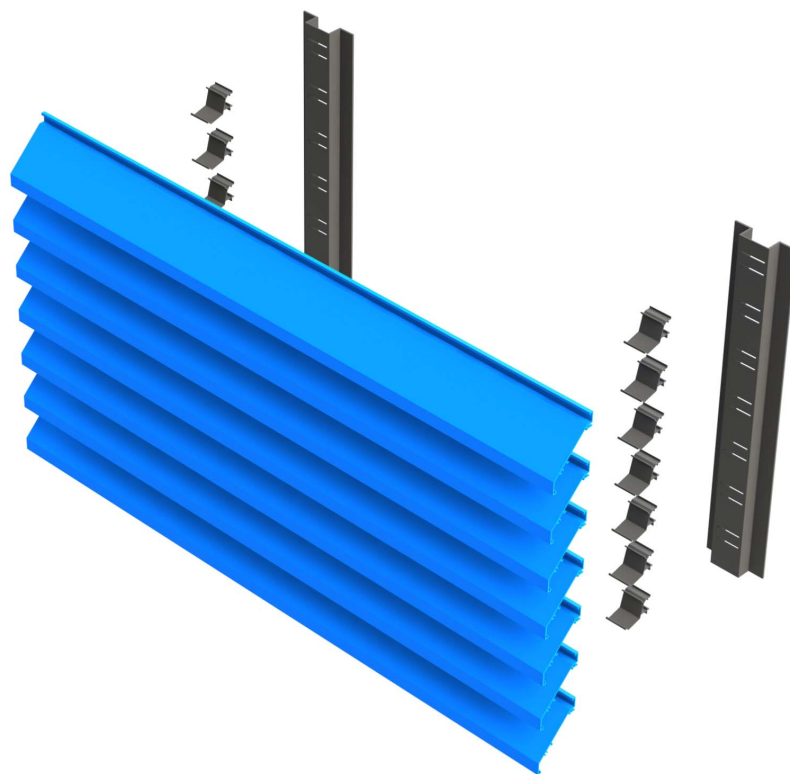
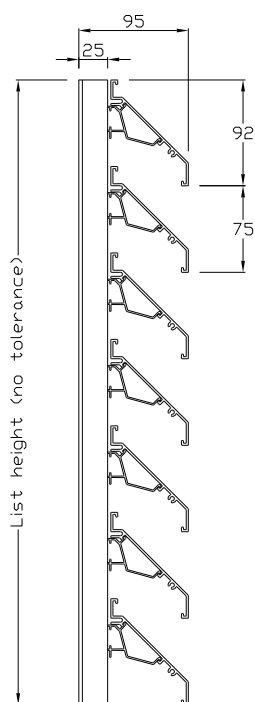
- Class C up to 1.5 m/s wind speed.
- Class D at and over 1.5 m/s wind speed.

### **Airflow performance**

Mean coefficient of entry:

0.252 (Class 3)

## Design



Where list height is not an exact multiple of blade height, we can supply a blanking piece for fitment at the top or bottom of the louvre.

## What is supplied?

Series WLX louvre cladding is supplied in kit form.

### Louvre blades

Blades will be supplied ready finished in 4m long sections to be cut to length on site. An appropriate total length of blade will be supplied to complete the installation.

If required HVC can supply blades pre-cut to avoid any cutting on site.

### Blade clips

Blade clips are supplied in the exact quantity required to complete the installation.

### Mullion

Mullion is supplied cut to length. The quantity of mullions supplied is calculated based on louvre size.

## Installation

1. **Mullions**  
Affix securely to the supporting steelwork/masonry at centres no more than 1200mm.
2. **Blade clips**  
Clip into the prepunched slots in the mullion.
3. **Blades**  
Push over clips until clip springs into place.

### Additional security for extreme installations

The clip system is very robust and is fit for purpose, however for the most extreme situations, for example where the louvre is being installed at height above a public space, some additional peace of mind is always welcome.

In such situations we recommend driving a Tek screw at the position shown through each blade and into the mullion behind. This should be done on at-least the outer mullions of each blade giving a minimum of two fixings.

Black plastic spacers (shown red in the illustration) can be supplied and should be placed in the position shown before driving the tek screw in. This will prevent overtightening of the screw deforming the clip.

Installations where this may be required should be discussed with us.



## Louvre blade finishes

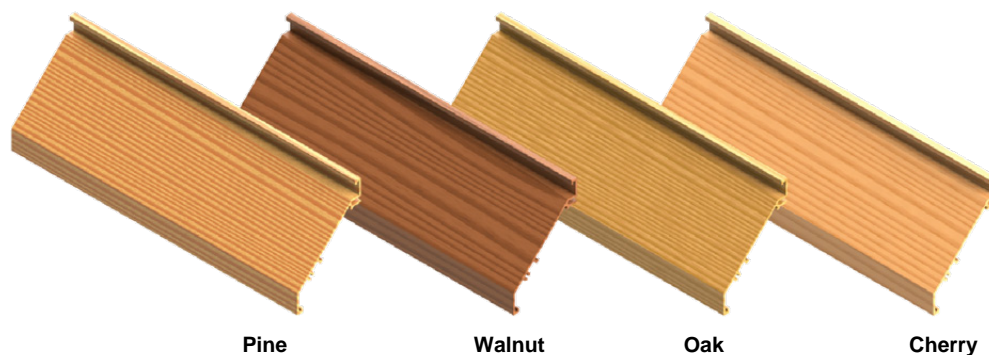
Mill aluminium

Brushed aluminium

Polyester powder coating to any RAL or BS colour

Anodised (25 micron) to dozens of different colours

Advanced wood effect wraps in smooth or textured finishes



Finishes shown are for illustration and may not be perfect representations of actual product, samples can be supplied on request.

Minimum order quantity of 25m<sup>2</sup> applies with any anodised finish.

## Ordering codes

### Example

1 - 5000 x 2000 - WLX - BS - FH - Wrap - Oak

### Codes

1)	Quantity		
2)	Size (mm)	(Width x height)	
3)	Series	WLX	Clip on weather louvre
4)	Screens	BS IS	Bird screen (12.5mm x 12.5mm mesh, galvanised steel) Insect screen (74% free area, galvanised steel)
5)	Finish	Mill Brushed RAL... BS... Wrap - Oak	Mill aluminium (standard) Brushed aluminium Polyester powder coated to RAL... Polyester powder coated to BS... Wood effect wrap and wood type

Leave code section blank if no option is required.

Finish only applies to louvre blades. Mullion and clips are supplied in a powder coated black finish.  
Bird/insect screen will be supplied cut to an appropriate total length for final cutting and fitting on site.

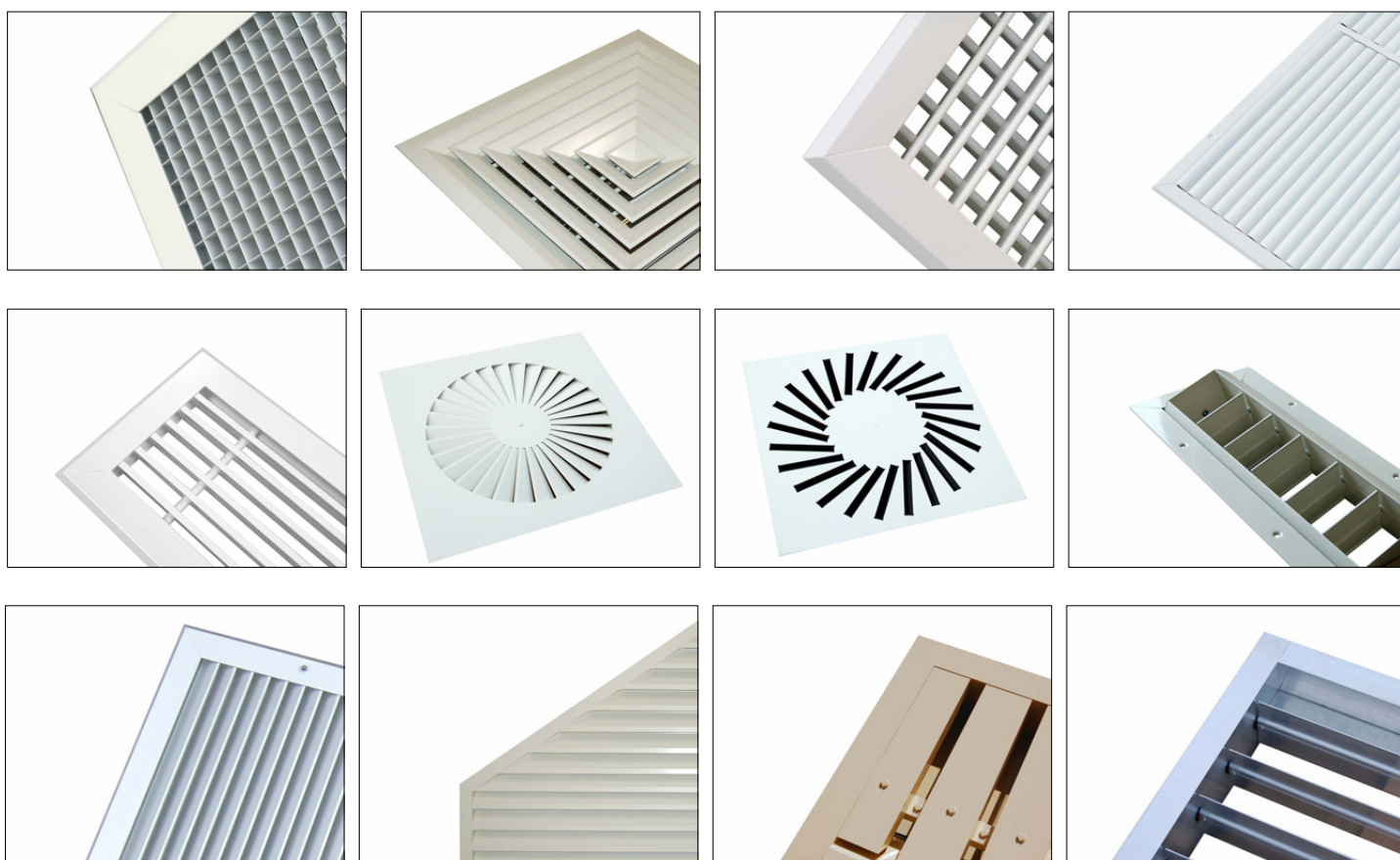


## HVC & NCA products

HVC offer the significant advantage of manufacturing both in duct and duct terminal equipment, making us a one stop shop for all your HVAC needs.

The products shown below are a selection, not an exhaustive list. Go to [www.h-v-c.com](http://www.h-v-c.com) for details on all HVC and NCA products.

### HVC: Grilles, Diffusers, Louvres and Volume Control Dampers



### NCA: Fire and Volume Control Dampers





Assessed to ISO 9001:2008  
Cert/Ref No. 1186

HVC Supplies (Stourbridge) Ltd  
Jason House  
Amblecote  
West Midlands  
DY8 4EY  
United Kingdom

Tel: +44 (0)1384 376555  
Fax: +44 (0)1384 392555

sales@h-v-c.com

[www.h-v-c.com](http://www.h-v-c.com)

All details within this brochure are correct at time of publication. However HVC's policy is one of continual product development. The right is reserved to alter any details published in this brochure without any prior notice. Any changes will appear on [www.h-v-c.com](http://www.h-v-c.com) as soon as is practically possible.

All information in this brochure is designed to be used for informative purposes only. HVC will not be legally bound by anything contained within this publication, or any other information distributed.

All references to companies not part of the HVC group of companies are used with the permission of their respective owners.